



INSTALLATION INSTRUCTIONS

IMPORTANT:

Please read all instructions before beginning installation. These guidelines are provided in good faith to help prevent any issues arising from errors during installation. The manufacturer of this product shall not be held responsible for any user actions taken or not taken during installation. There are many details of the installation that are assumed to be general mechanical knowledge to experienced installers; which are not detailed in these instructions. These installation guidelines are intended to serve as professional recommendations and are not a step-by-step, fail-safe installation checklist. Selection of an experienced installer is the sole responsibility of the project owner.



Parts Included: (Lights are sold separately)

KC M-Rack:	Front Light Bar:	Chase Bar:	Side Lights:
A - Driver side - Support Rail (1)	A - KC LED Light Bar (1)	A - 28" KC Rear Chase Bar	A - 10" KC LED Side Light
B - Pass. Side - Support Rail (1)	B - M8 Socket cap (2)	B - 1/4-20 Carriage Bolts (4)	B - 1/4-20 Carriage Bolts (4)
C - Extruded Cross Bars (5)	C - M8 washer (2)	C - 1/4-20 Hex Bolts (4)	C - 1/4-20 nut (4)
D - KC Logo Plate (2)		D - 1/4-20 nut (8)	D - Side light bracket (2)
E - Blind Rivets (4)		E - Rear light bracket (2)	
F - Button Head Allen Cap Screw (20)			
G - 1/4" Washer flat (20)			
H - M6 Button cap screw			
I - Black Aluminum Spacers (10)			

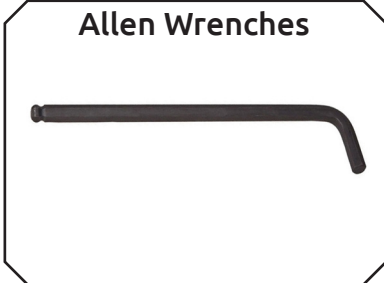
*can hold a total of 4 side lights

KC M-RACK TACOMA INSTALLATION GUIDELINES

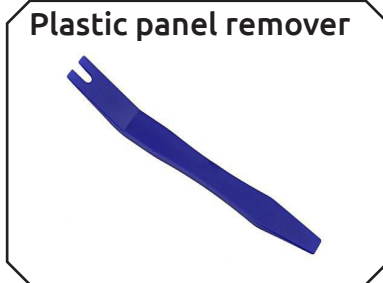
TOOLS NEEDED FOR INSTALLATION

For this installation you will need Allen wrenches, a 3/8 wrench or socket, blind rivet tool.

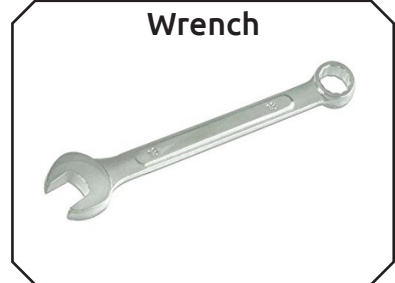
Allen Wrenches



Plastic panel remover



Wrench



Drill & Bits



Blind Rivet Tool



Silicone Sealant



INSTALLATION INSTRUCTIONS

1.

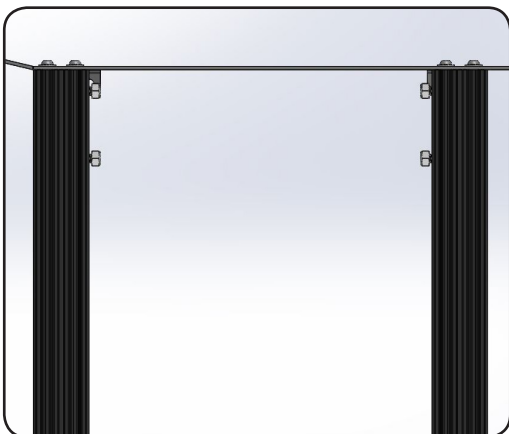


Support Rail to Cross Bar Assembly

(It is recommended that the assembly be done off the vehicle, "up-side-down" on a flat surface.)

Starting with either Support Rail, begin by loosely fastening the extruded cross bars using the supplied 1/4 -20 button head allen-cap screws and 1/4" washers (2x screws & washers per cross bar). With the cross bars square to the top of the rail, torque down until tight. (Blue thread-locker is recommended)

2.



Side Light Mounting Option

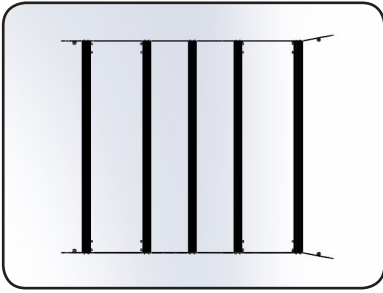
Whether or not Side Lights are being installed, doing this step will save a lot of time for future installs. The rear chase bar also uses 4 carriage bolts on the rear-most extrusion channel.

Each Side Light Mounting Bracket will require (2) carriage bolts to mount into position. Begin by sliding the carriage bolts into position from the open end of the extruded cross bars, as shown in the image.

Due to manufacturing tolerances of the hardware, some of the carriage bolts will slide easier than the others. One side will slide easier than the other.

KC M-RACK TACOMA INSTALLATION GUIDELINES

3.



Attach the Second Support Rail

After all the desired carriage bolts have been installed, fasten the remaining side rail to the extruded cross bars, as done in Step #1. Once attached, ensure all screws are securely fastened. See Step 11 for mounting the LED light bar. Once the light bar is installed and both side rails are attached the rack is fully assembled.

4.



Removing the Gutter Channel

The rubber gutter extrusion is held in place with double sided adhesive tape. The adhesive tape is towards the front and rear of the vehicle. There is also a clip holding the rubber gutter extrusion in place at the front of the vehicle. Remove the rubber gutter extrusion using a flat plastic panel remover. Pry up on the rubber channel undo the clip at the front of the rubber gutter extrusion first then gently peel the extrusion down the length of the vehicle.

5.



Placing the spacers

Remove the factory tape that is installed over the the top of the existing tapped holes in the roof of the vehicle. The M-Rack utilizes the existing factory roof rack mounting holes. Use silicone sealant that has a long set time and matches the color of the vehicle. Fill the tapped holes in the roof and cover the bottom of the spacers with silicone sealant. Use

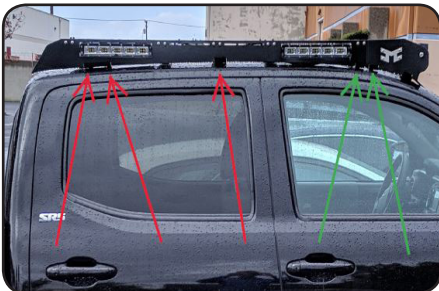
6.



Drilling the Gutter Channel

The rubber gutter extrusion can be drilled out to have the spacer sit through the extrusion. This cleans up the look and can help seal the roof rack. Mark the holes by placing the extrusion next to the roof rack. Place the rubber gutter extrusion over the spacers and trace around them on

7.

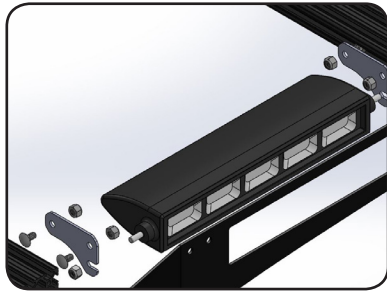


Fastening the rack

Place the Rubber gutter extrusion back in the gutter channel and set the spacers in place, place the rack on top of the spacers and install the hardware through the tabs on the rack, and into the pre drilled holes. Torque the bolts until tight. The green arrows represent the shorter spacers. The red arrows represent where the longer spacers go.

KC M-RACK TACOMA INSTALLATION GUIDELINES

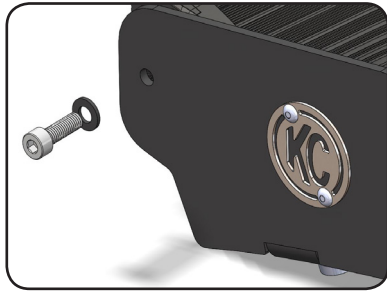
8.



Attach the Side Lights (Optional)

Attach the side light mounting plates onto the carriage bolts that were previously installed on the side channels of the extrusion. Thread the nuts onto the stud that is attached to the 10" light. Aim and position the lights to the desired location, and securely tighten the hardware to lock the lights in place.

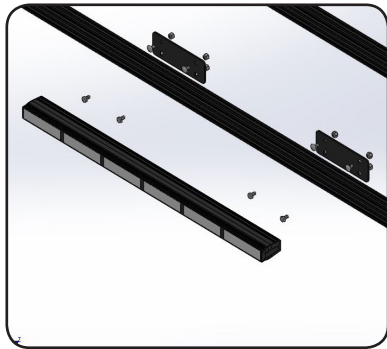
9.



Attach the Light Bar (Optional)

Holding the light bar in place, thread the socket cap screw and fasten the light into position. Be sure to aim the lights to the desired location before tightening down (this works best at night). For a Pro6 Installation, please refer to the Pro6 instruction manual.

10.



KC Rear Chase Bar (Optional)

Fit the Rear Chase Bar bracket onto the previously installed carriage bolts on the rear extruded cross bar. Hand-tighten the 1/4-20 nuts to hold the brackets in position. Install the 1/4" hex bolts into the KC Rear Chase Bar by removing the end cap and sliding the hex head into the extruded channel. Re-install the end cap and position the 1/4" hex bolts into the Chase Bar brackets. Once the light is in the desired position, securely fasten the Rear Chase Bar.

PRODUCT REGISTRATION

Thank you for becoming part of the KC HiLiTES family and purchasing one of our premium KC products! With over 45 years of history in the auxiliary lighting market, you have become a part of our ever growing family, and we encourage you to register your product online at [HTTP://REGISTER.KCHILITES.COM](http://register.kchilites.com) to ensure you get all the benefits of owning a KC HiLiTES product.